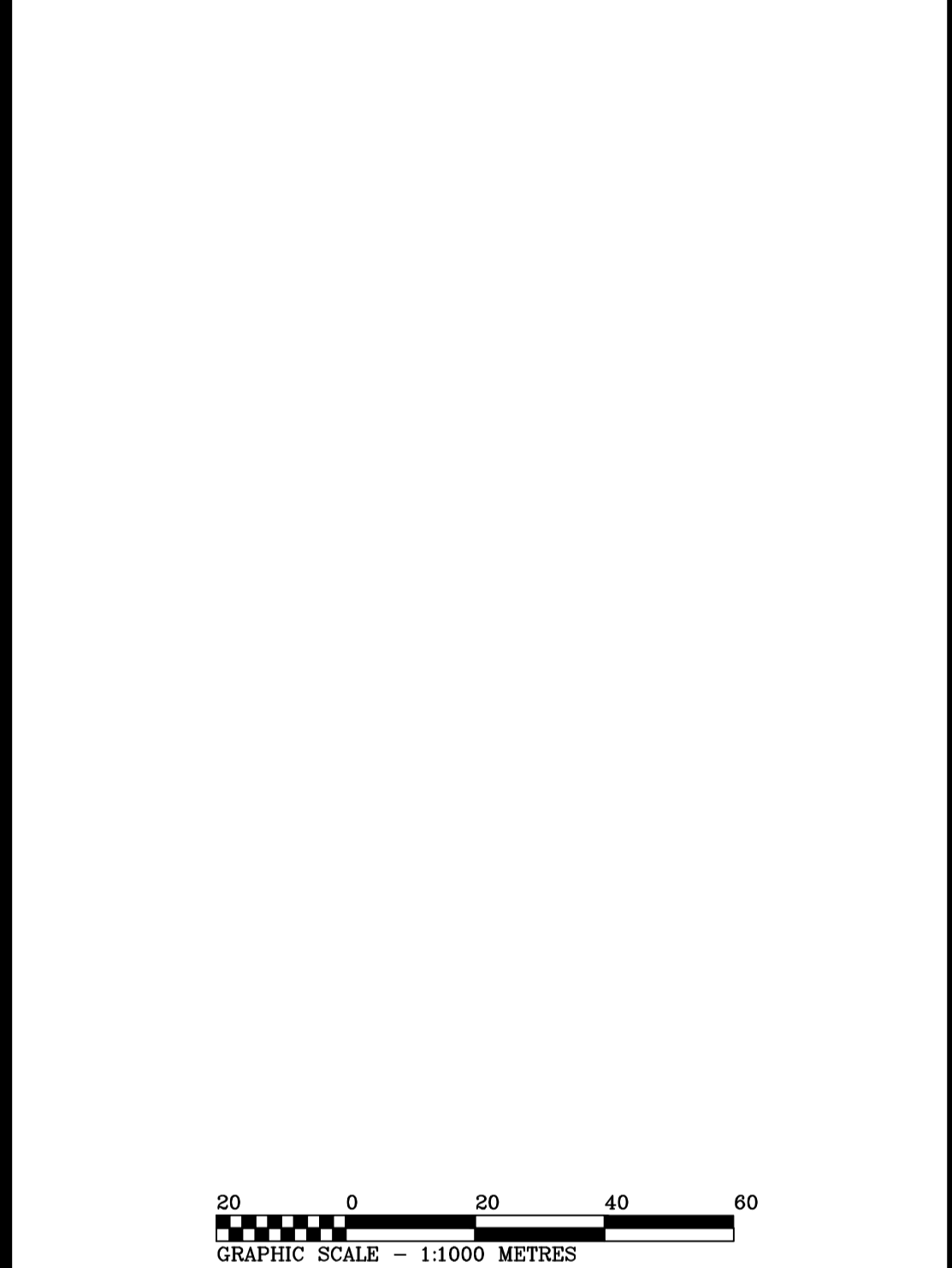


- KEY PLAN 1:50,000
- NOTES:
1. BEARINGS SHOWN HEREON ARE BASED ON THE NOVA SCOTIA COORDINATE SYSTEM, AT577 ELLIPSOID 1979 ADJUSTMENT ZONE 5, CENTRAL MERIDIAN LONGITUDE 64°30' WEST.
 2. FIELD SURVEY CONDUCTED DURING THE PERIOD OF 6 MAY TO 6 OCTOBER 2015.
 3. MEASUREMENTS SHOWN HEREON ARE MEASURED AND CALCULATED VALUES.
 4. MEASUREMENTS WERE CHECK MEASURED USING CONVENTIONAL AND GPS CHECK MEASUREMENTS.
 5. FIELD TRAVERSE CLOSURES WERE IN THE ORDER OF 1 PART IN 11,342, 35,910, 8265, 7105 AND 15093.

- REFERENCE PLANS:
1. SEE FINAL PLAN OF SUBDIVISION OF LANDS OF PURE NATURE DEVELOPMENTS LIMITED SITUATE AT LAKE PLEASANT ROAD AT SPRINGFIELD, DATED 18 AUGUST 2014 BY KEVIN LOMBARD NSLS, REGISTERED AS PLAN NUMBER 105877717.
 2. SEE FINAL PLAN OF SUBDIVISION OF LANDS OF PURE NATURE DEVELOPMENTS LIMITED SITUATE AT LAKE PLEASANT ROAD AND AIR FORCE CAMP ROAD AT SPRINGFIELD, DATED 23 NOVEMBER 2014 BY KEVIN LOMBARD NSLS, REGISTERED AS PLAN NUMBER 106539159.
 3. SEE PLAN OF SUBDIVISION SHOWING LOTS 1 THROUGH 27 AND LOTS 32 THROUGH 35, PROPERTY OF KIRK FOREST PRODUCTS LTD AT SPRINGFIELD, DATED 7 MAY 1998 BY LESTER BERRIGAN NSLS. SAID PLAN DID NOT RECEIVE SUBDIVISION APPROVAL.

LEGEND

PARCEL IDENTIFICATION NUMBER	PID #
NOVA SCOTIA COORDINATE MONUMENT	N.S.C.M. Δ
SURVEY MARKER	SM \triangle
IRON PIPE	IP \circ
IRON ROD	IR \circ
POINT OF CURVATURE	PC \circ
UTILITY POLE	UP \square
WOODEN POST	WP \square
WIRE FENCE	WF \times
WITNESS FOUND	Wit. Fd. \times
DISTURBED RIGHT OF WAY CALCULATED BY PLAN	Dist. R.O.W. (C) \square
WELL	WELL \circ
ORDINARY HIGH WATER MARK	OHWM (PR) \square
PRIVATE ROAD	PR \square
DRILL HOLE	DH \circ
NOT TO SCALE	NTS \square
PLAN MEASUREMENT	P \square
WETLAND	WETLAND \downarrow



LOT FORMATION

PID 05307517 TO BE SUBDIVIDED TO CREATE LOTS 1 THROUGH 9 INCLUSIVE AND REMAINDER LANDS

TENTATIVE PLAN OF SUBDIVISION OF LANDS OF PURE NATURE DEVELOPMENTS LIMITED SITUATE AT AIR FORCE CAMP ROAD AND SAWDUST ROAD AT SPRINGFIELD

ANNAPOLIS COUNTY
NOVA SCOTIA

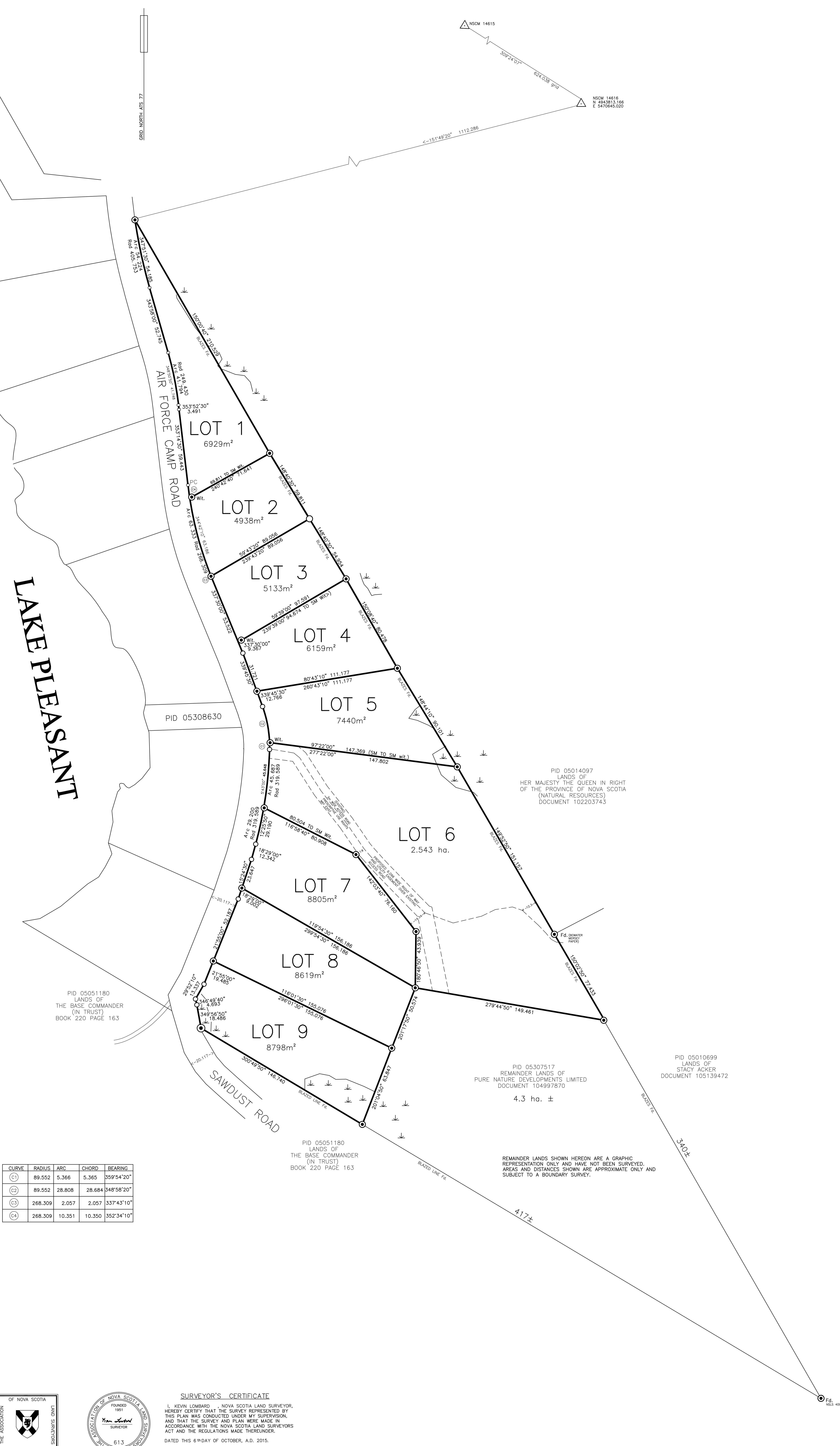
DATE : 6 OCTOBER 2015
PURETENTA 3 2015.DWG

NOVA GEOMATICS INC

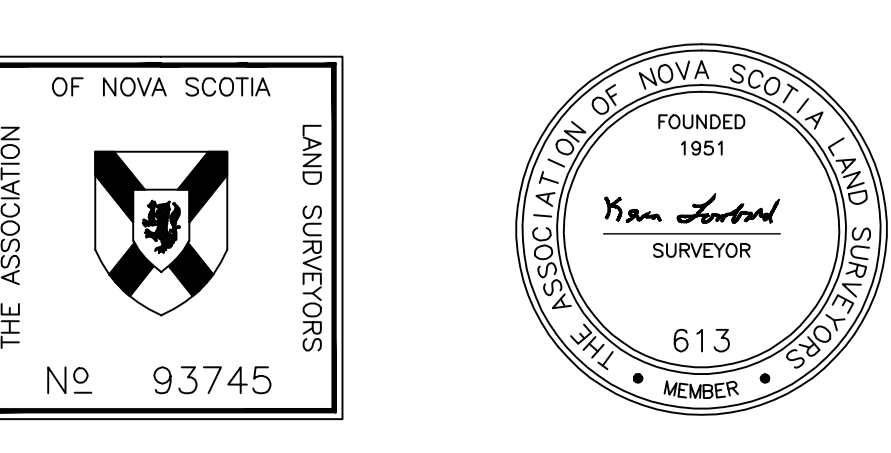
Novageomatics@live.ca

902-877-1962
902-837-4284

P.O. Box 226
Weymouth, NS
B0W 3T0



CURVE	RADIUS	ARC	CHORD	BEARING
(C1)	89.552	5.366	5.365	359°54'20"
(C2)	89.552	28.808	28.684	348°58'20"
(C3)	268.309	2.057	2.057	337°43'10"
(C4)	268.309	10.351	10.350	352°34'10"



SURVEYOR'S CERTIFICATE

I, KEVIN LOMBARD, NOVA SCOTIA LAND SURVEYOR, HEREBY CERTIFY THAT THE SURVEY REPRESENTED BY THIS PLAN WAS CONDUCTED UNDER MY SUPERVISION, AND THAT THE SURVEY AND PLAN WERE MADE IN ACCORDANCE WITH THE NOVA SCOTIA LAND SURVEYORS ACT AND THE REGULATIONS MADE THEREUNDER.

DATED THIS 6TH DAY OF OCTOBER, A.D. 2015.

Kevin Lombard, N.S.L.S.